

NC7WB3125 TinyLogic® UHS 2-Bit Low Power Bus Switch

General Description

The NC7WB3125 is a 2-bit ultra high-speed CMOS FET bus switch with TTL-compatible active LOW control inputs. The low On Resistance of the switch allows inputs to be connected to outputs with minimal propagation delay and without generating additional ground bounce noise. The device is organized as a 2-bit switch with independent bus enable (\overline{OE}) controls. When \overline{OE} is LOW, the switch is ON and Port A is connected to Port B. When \overline{OE} is HIGH, the switch is OPEN and a high-impedance state exists between the two ports. Control inputs tolerate voltages up to 5.5V independent of V_{CC} .

Features

- Space saving US8 surface mount package
- MicroPak™ Pb-Free leadless package
- Typical 3Ω switch resistance at 5.0V V_{CC}
- Minimal propagation delay through the switch
- Power down high impedance input/output
- Zero bounce in flow through mode
- TTL compatible active LOW control inputs
- Control inputs are overvoltage tolerant
- Bus switch replacement for Logic x125 part

Ordering Code:

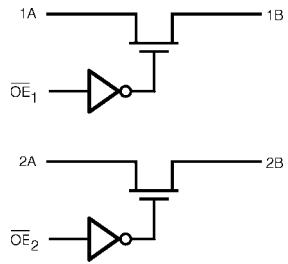
| Order Number | Package Number | Product Code Top Mark | Package Description | Supplied As |
|-------------------------------|----------------|--------------------------|---|---------------------------|
| NC7WB3125K8X | MAB08A | WB25 | 8-Lead US8, JEDEC MO-187, Variation CA 3.1mm Wide | 3k Units on Tape and Reel |
| NC7WB3125L8X (Preliminary) | MAC08A | T4 | Pb-Free 8-Lead MicroPak, 1.6 mm Wide | 5k Units on Tape and Reel |

Pb-Free package per JEDEC J-STD-020B.

TinyLogic® is a registered trademark of Fairchild Semiconductor Corporation.
MicroPak™ is a trademark of Fairchild Semiconductor Corporation.

NC7WB3125 TinyLogic® UHS 2-Bit Low Power Bus Switch

Logic Diagram



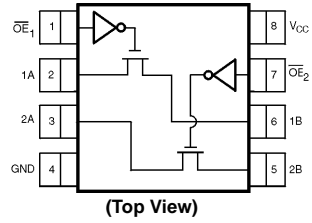
Pin Descriptions

| Pin Name | Description |
|-----------------|------------------|
| A | Bus A |
| B | Bus B |
| \overline{OE} | Bus Enable Input |

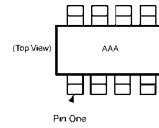
Function Table

| Bus Enable Input \overline{OE} | Function |
|----------------------------------|------------------|
| L | B Connected to A |
| H | Disconnected |

Connection Diagrams



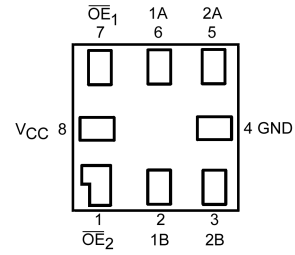
Pin One Orientation Diagram



AAA represents Product Code Top Mark - see ordering code

Note: Orientation of Top Mark determines Pin One location. Read the top product code mark left to right, Pin One is the lower left pin (see diagram).

Pad Assignments for MicroPak



(Top Thru View)

Absolute Maximum Ratings (Note 1)

| | |
|--|-----------------|
| Supply Voltage (V_{CC}) | -0.5V to +7.0V |
| DC Switch Voltage (V_S) | -0.5V to +7.0V |
| DC Output Voltage (V_{IN}) (Note 2) | -0.5V to +7.0V |
| DC Input Diode Current (I_{IK}) $V_{IN} < 0V$ | -50 mA |
| DC Output (I_{OUT}) Current | 128 mA |
| DC V_{CC} or Ground Current (I_{CC}/I_{GND}) | ± 100 mA |
| Storage Temperature Range (T_{STG}) | -65°C to +150°C |
| Junction Temperature under Bias (T_J) | +150°C |
| Junction Lead Temperature (T_L) (Soldering, 10 Seconds) | +260°C |
| Power Dissipation (P_D) @ +85°C | 250 mW |

Recommended Operating Conditions (Note 3)

| | |
|---|----------------|
| Supply Operating (V_{CC}) | 4.0V to 5.5V |
| Control Input Voltage (V_{IN}) | 0V to 5.5V |
| Switch Input Voltage (V_{IN}) | 0V to 5.5V |
| Output Voltage (V_{OUT}) | 0V to 5.5V |
| Operating Temperature (T_A) | -40°C to +85°C |
| Input Rise and Fall Time (t_r, t_f) | |
| Switch Control Input | 0 ns/V to 5 ns |
| Switch I/O | 0 ns/V to DC |
| Thermal Resistance (θ_{JA}) | 250°C/W |

Note 1: The "Absolute Maximum Ratings" are those values beyond which the safety of the device cannot be guaranteed. The device should not be operated at these limits. The parametric values defined in the Electrical Characteristics tables are not guaranteed at the absolute maximum ratings. The "Recommended Operating Conditions" table will define the conditions for actual device operation.

Note 2: The input and output negative voltage ratings may be exceeded if the input and output diode current ratings are observed.

Note 3: Unused logic inputs must be held HIGH or LOW. They may not float.

DC Electrical Characteristics

| Symbol | Parameter | V_{CC} (V) | $T_A = -40^\circ\text{C to } +85^\circ\text{C}$ | | | Units | Conditions |
|-----------------|---|-----------------|---|-----|---------------------------------|---------------|---|
| | | | Min | Typ | Max | | |
| V_{IK} | Clamp Diode Voltage | 4.5 | | | -1.2 | V | $I_{IN} = -18$ mA |
| V_{IH} | HIGH Level Input Voltage | 4.0 to 5.5 | 2.0 | | | V | |
| V_{IL} | LOW Level Input Voltage | 4.0 to 5.5 | | | 0.8 | V | |
| V_{OH} | HIGH Level Output Voltage | 4.0 to 5.5 | See Figure 3 | | | V | $V_{IN} = V_{CC}$ |
| I_{IN} | Input Leakage Current | 5.5 | | | ± 1.0 | μA | $0 \leq V_{IN} \leq 5.5V$ |
| I_{OFF} | Switch OFF Leakage Current | 5.5 | | | ± 1.0 | μA | $0 \leq A, B \leq V_{CC}$ |
| R_{ON} | Switch On Resistance (Note 4) | 4.5 | 3 | 7 | | Ω | $V_{IN} = 0V, I_{IN} = 64$ mA |
| | | 4.5 | 3 | 7 | $V_{IN} = 0V, I_{IN} = 30$ mA | | |
| | | 4.5 | 6 | 15 | $V_{IN} = 2.4V, I_{IN} = 15$ mA | | |
| | | 4.0 | 10 | 20 | $V_{IN} = 2.4V, I_{IN} = 15$ mA | | |
| I_{CC} | Quiescent Supply Current | 5.5 | | | 3 | μA | $V_{IN} = V_{CC}$ or GND $I_{OUT} = 0$ |
| ΔI_{CC} | Increase in I_{CC} per Input (Note 5) | 5.5 | 1 | 2.5 | | mA | $V_{IN} = 3.4V$, One \overline{OE} Input only, Other $\overline{OE} = V_{CC}$ |

Note 4: Measured by the voltage drop between A and B pins at the indicated current through the switch. On Resistance is determined by the lower of the voltages on the two (A or B) pins.

Note 5: Per TTL driven input ($V_{IN} = 3.4V$, control input only). A and B pins do not contribute to I_{CC} .

AC Electrical Characteristics

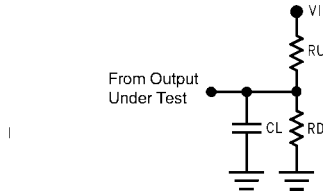
| Symbol | Parameter | V _{CC} (V) | T _A = -40°C to +85°C, C _L = 50 pF, R _U = R _D = 500Ω | | | Units | Conditions | Figure Number |
|--|--|------------------------|--|-----|------|-------|--|------------------|
| | | | Min | Typ | Max | | | |
| t _{PHL} , t _{PLH} | Propagation Delay Bus to Bus (Note 6) | 4.0 to 5.5 | | | 0.25 | ns | V _I = OPEN | Figures 1, 2 |
| t _{PZL} , t _{PZH} | Output Enable Time | 4.5 to 5.5 | 0.8 | 2.5 | 4.2 | ns | V _I = 7V for t _{PZL} V _I = 0V for t _{PZH} | Figures 1, 2 |
| | | 4.0 | 0.8 | 3.0 | 4.6 | | | |
| t _{PLZ} , t _{PHZ} | Output Disable Time | 4.5 to 5.5 | 0.8 | 3.1 | 4.8 | ns | V _I = 7V for t _{PLZ} V _I = 0V for t _{PHZ} | Figures 1, 2 |
| | | 4.0 | 0.8 | 2.9 | 4.4 | | | |

Note 6: This parameter is guaranteed by design. The bus switch contributes no propagation delay other than the RC delay of the typical On Resistance of the switch and the 50 pF load capacitance, when driven by an ideal voltage source (zero output impedance). The specified limit is calculated on this basis.

Capacitance

| Symbol | Parameter | Typ | Max | Units | Conditions |
|------------------------|-------------------------------|-----|-----|-------|--|
| C _{IN} | Control Pin Input Capacitance | 2.5 | | pF | V _{CC} = 0V |
| C _{I/O (OFF)} | Port Off Capacitance | 6 | | pF | V _{CC} = 5.0V = \overline{OE} |
| C _{I/O (ON)} | Switch ON Capacitance | 12 | | pF | V _{CC} = 5.0V, \overline{OE} = 0V |

AC Loading and Waveforms



Input driven by 50Ω source terminated in 50Ω
C_L includes load and stray capacitance
Input PRR = 1.0 MHz; t_W = 500 ns

FIGURE 1. AC Test Circuit

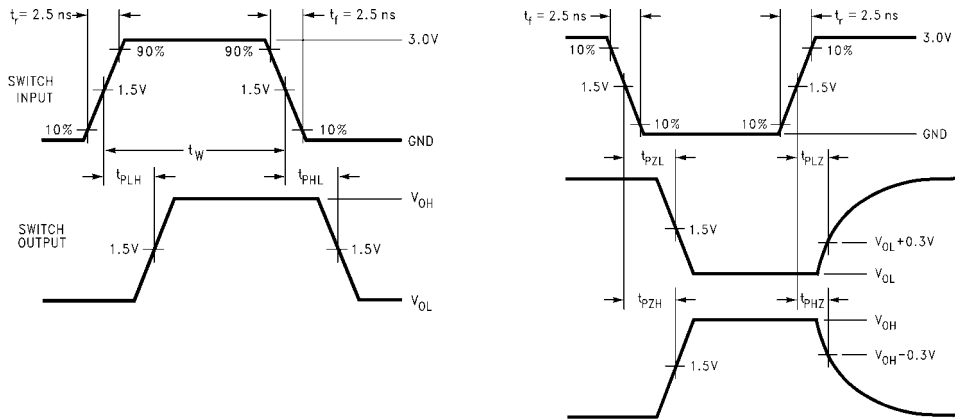


FIGURE 2. AC Waveforms

DC Characteristics

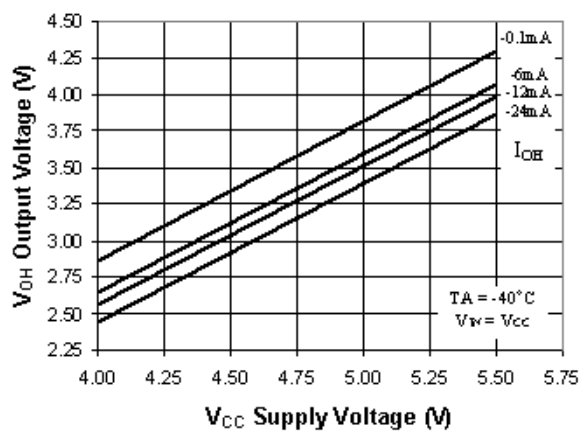
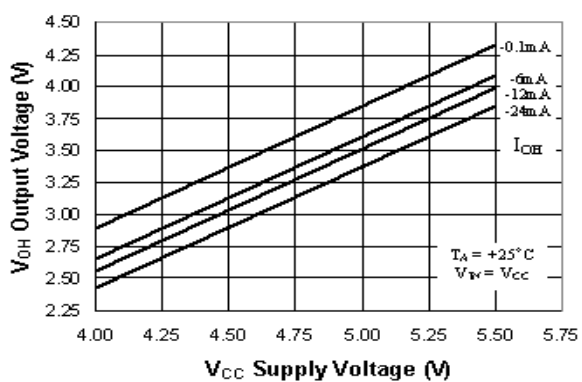
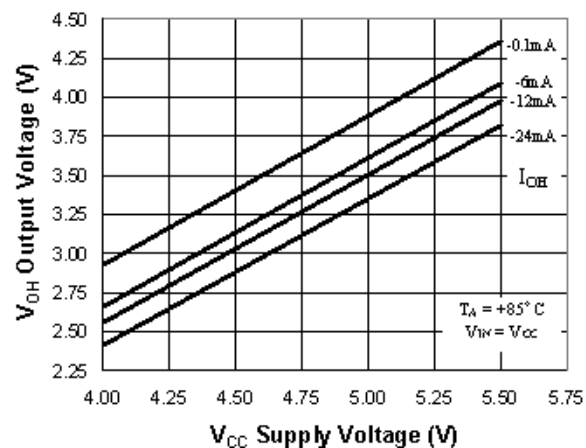


FIGURE 3. Typical High Level Output Voltage vs. Supply Voltage

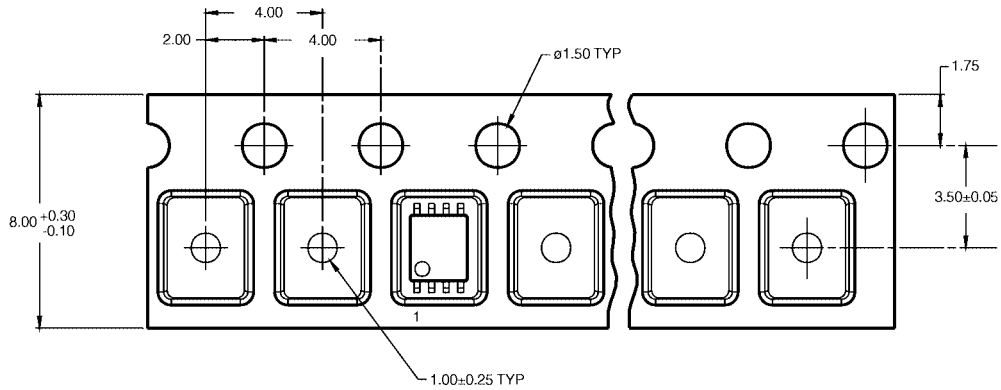
NC7WB3125

Tape and Reel Specification

TAPE FORMAT for US8

| Package Designator | Tape Section | Number Cavities | Cavity Status | Cover Tape Status |
|--------------------|--------------------|-----------------|---------------|-------------------|
| K8X | Leader (Start End) | 125 (typ) | Empty | Sealed |
| | Carrier | 250 | Filled | Sealed |
| | Trailer (Hub End) | 75 (typ) | Empty | Sealed |

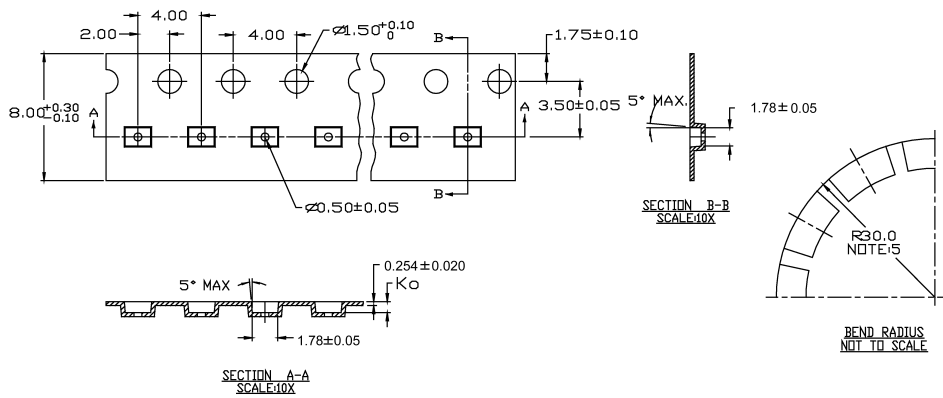
TAPE DIMENSIONS inches (millimeters)



TAPE FORMAT for MicroPak

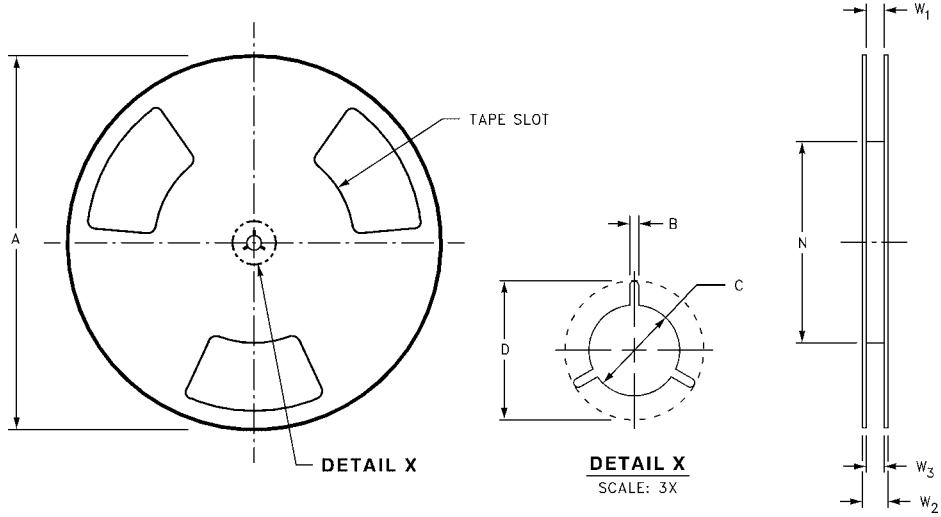
| Package Designator | Tape Section | Number Cavities | Cavity Status | Cover Tape Status |
|--------------------|--------------------|-----------------|---------------|-------------------|
| L8X | Leader (Start End) | 125 (typ) | Empty | Sealed |
| | Carrier | 250 | Filled | Sealed |
| | Trailer (Hub End) | 75 (typ) | Empty | Sealed |

TAPE DIMENSIONS inches (millimeters)



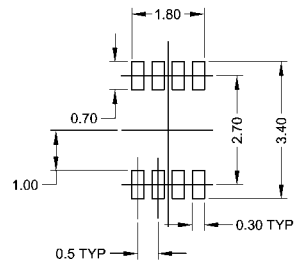
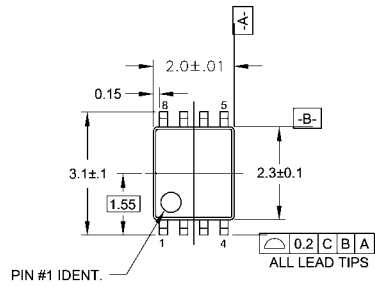
Tape and Reel Specification (Continued)

REEL DIMENSIONS inches (millimeters)

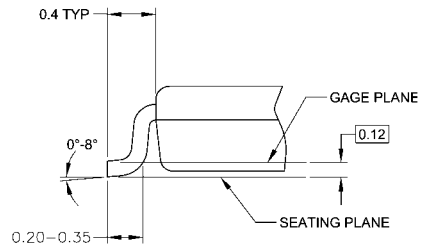
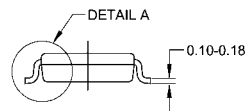
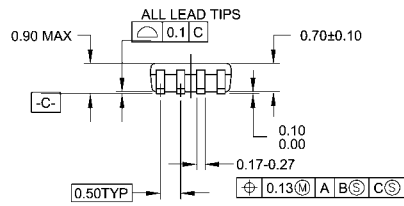


| Tape Size | A | B | C | D | N | W1 | W2 | W3 |
|-----------|----------------|-----------------|------------------|------------------|------------------|---|------------------|--|
| 8 mm | 7.0 (177.8) | 0.059 (1.50) | 0.512 (13.00) | 0.795 (20.20) | 2.165 (55.00) | 0.331 + 0.059/-0.000 (8.40 + 1.50/-0.00) | 0.567 (14.40) | W1 + 0.078/-0.039 (W1 + 2.00/-1.00) |

Physical Dimensions inches (millimeters) unless otherwise noted



LAND PATTERN RECOMMENDATION



DETAIL A

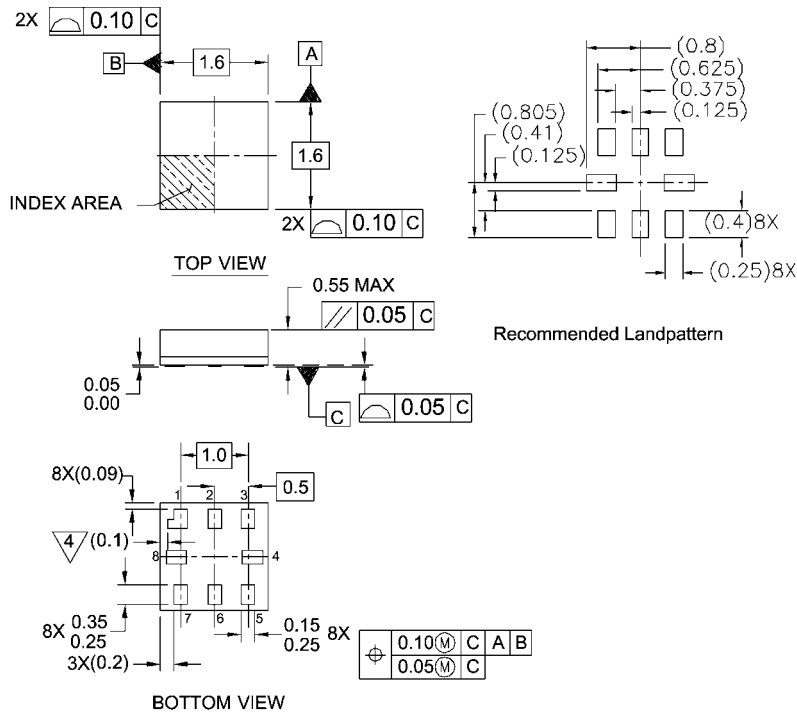
NOTES:

- A. CONFORMS TO JEDEC REGISTRATION MO-187
- B. DIMENSIONS ARE IN MILLIMETERS.
- C. DIMENSIONS ARE EXCLUSIVE OF BURRS, MOLD FLASH, AND TIE BAR EXTRUSIONS.
- D. DIMENSIONS AND TOLERANCES PER ANSI Y14.5M, 1982.

MAB08AREVC

**8-Lead US8, JEDEC MO-187, Variation CA 3.1mm Wide
Package Number MAB08A**

Physical Dimensions inches (millimeters) unless otherwise noted (Continued)



Notes:

1. PACKAGE CONFORMS TO JEDEC MO-255 VARIATION UAAD
2. DIMENSIONS ARE IN MILLIMETERS
3. DRAWING CONFORMS TO ASME Y.14M-1994
4. PIN 1 FLAG, END OF PACKAGE OFFSET.

MAC08AREVC

**Pb-Free 8-Lead MicroPak, 1.6 mm Wide
Package Number MAC08A
(Preliminary)**

Fairchild does not assume any responsibility for use of any circuitry described, no circuit patent licenses are implied and Fairchild reserves the right at any time without notice to change said circuitry and specifications.

LIFE SUPPORT POLICY

FAIRCHILD'S PRODUCTS ARE NOT AUTHORIZED FOR USE AS CRITICAL COMPONENTS IN LIFE SUPPORT DEVICES OR SYSTEMS WITHOUT THE EXPRESS WRITTEN APPROVAL OF THE PRESIDENT OF FAIRCHILD SEMICONDUCTOR CORPORATION. As used herein:

1. Life support devices or systems are devices or systems which, (a) are intended for surgical implant into the body, or (b) support or sustain life, and (c) whose failure to perform when properly used in accordance with instructions for use provided in the labeling, can be reasonably expected to result in a significant injury to the user.
2. A critical component in any component of a life support device or system whose failure to perform can be reasonably expected to cause the failure of the life support device or system, or to affect its safety or effectiveness.

www.fairchildsemi.com